

Elastomer Fatigue Property Mapping – Testing Service

Fatigue analysis of elastomers is famously tricky but it doesn't have to be. The *Fatigue Property Mapping*[™] family of characterization protocols systematically measures the factors that govern durability. The result is a set of engineering parameters that are ready to use with durability simulation codes such as Endurica CL[™] and fe-safe/rubber[™]. It's a powerful and efficient way to see how your rubber part endures under realistic operating conditions. Pick the modules you need to get just the right physics into your analysis.

Hyperelastic Module

Simple, planar, and equibiaxial tension, Mullins effect

Intrinsic Strength (>10⁶ cycles) Module

Quantify endurance limits

Thermal Module

Quantify dissipative properties, thermal properties, temperature dependence

Non-Relaxing Module

Quantify strain crystallization, min. and mean strain effects

Core Fatigue Module

Fully relaxing behavior from both nucleation and fracture mechanical perspectives

Cyclic Softening Module

Quantify cyclic softening effects

Extended Life (>10⁶ cycles) Module

Quantify endurance limit, estimate aging rate of stiffness, intrinsic and ultimate strength

Creep Module

Quantify creep crack growth rate effects

Reliability Module

Weibull statistics for strength and crack precursor size populations

Follow the instructions in this document to submit your material(s) and place your order for characterization.

Fatigue Property Map Prices

October 2019. Pricing subject to change.

Item	Description	Price		
Stress-Strain Behavior				
FPM-H	Hyperelastic Module (-40°C <math>T</math> <math>< 150^{\circ}\text{C}</math>) <ul style="list-style-type: none"> Required as a prerequisite to Finite Element Analysis, lab ambient temperature one temperature between -40°C and 150°C 	\$2,100		
	<p style="text-align: center;">Deliverables</p> <table border="0"> <tr> <td style="vertical-align: top;"> <p style="text-align: center;">Experiments</p> <ul style="list-style-type: none"> simple tension, slow cyclic loading, raw data planar tension, slow cyclic loading, raw data biaxial tension, slow cyclic loading, raw data </td> <td style="vertical-align: top;"> <p style="text-align: center;">Analysis and Reporting</p> <ul style="list-style-type: none"> Identification of a suitable hyperelastic function and parameters for FEA Identification of parameters for specifying Mullins effect in ABAQUS, ANSYS or MARC Unit cube validation and stability check </td> </tr> </table>	<p style="text-align: center;">Experiments</p> <ul style="list-style-type: none"> simple tension, slow cyclic loading, raw data planar tension, slow cyclic loading, raw data biaxial tension, slow cyclic loading, raw data 	<p style="text-align: center;">Analysis and Reporting</p> <ul style="list-style-type: none"> Identification of a suitable hyperelastic function and parameters for FEA Identification of parameters for specifying Mullins effect in ABAQUS, ANSYS or MARC Unit cube validation and stability check 	
<p style="text-align: center;">Experiments</p> <ul style="list-style-type: none"> simple tension, slow cyclic loading, raw data planar tension, slow cyclic loading, raw data biaxial tension, slow cyclic loading, raw data 	<p style="text-align: center;">Analysis and Reporting</p> <ul style="list-style-type: none"> Identification of a suitable hyperelastic function and parameters for FEA Identification of parameters for specifying Mullins effect in ABAQUS, ANSYS or MARC Unit cube validation and stability check 			
FPM-HV	Volumetric Compression Add-on to Hyperelastic Module <ul style="list-style-type: none"> Useful for specifying dilatational behavior of elastomers in highly confined deformation states. Recommended when $p / K > 5\%$. 	\$475		

Fatigue Behavior

FPM-C	Fully Relaxing Fatigue - Core Module <ul style="list-style-type: none"> Required for all fatigue analyses User specifies one temperature between -40°C and 175°C Fully relaxing ($R = 0$) conditions for all fatigue tests 	\$7,750		
	<p style="text-align: center;">Deliverables</p> <table border="0"> <tr> <td style="vertical-align: top;"> <p style="text-align: center;">Experiments</p> <ul style="list-style-type: none"> static tearing raw data fatigue crack growth raw data (20 hour procedure) cyclic simple tension to rupture raw data cycles to failure tensile raw data, 2 strain levels </td> <td style="vertical-align: top;"> <p style="text-align: center;">Analysis and Reporting</p> <ul style="list-style-type: none"> critical tearing energy T_c tensile strain, stress, energy at break fatigue crack growth rate curve and its parameters (r_c, and F) crack precursor size c_0 calculation and sensitivity analysis strain-life, stress-life, and energy-life fatigue curves </td> </tr> </table>	<p style="text-align: center;">Experiments</p> <ul style="list-style-type: none"> static tearing raw data fatigue crack growth raw data (20 hour procedure) cyclic simple tension to rupture raw data cycles to failure tensile raw data, 2 strain levels 	<p style="text-align: center;">Analysis and Reporting</p> <ul style="list-style-type: none"> critical tearing energy T_c tensile strain, stress, energy at break fatigue crack growth rate curve and its parameters (r_c, and F) crack precursor size c_0 calculation and sensitivity analysis strain-life, stress-life, and energy-life fatigue curves 	
<p style="text-align: center;">Experiments</p> <ul style="list-style-type: none"> static tearing raw data fatigue crack growth raw data (20 hour procedure) cyclic simple tension to rupture raw data cycles to failure tensile raw data, 2 strain levels 	<p style="text-align: center;">Analysis and Reporting</p> <ul style="list-style-type: none"> critical tearing energy T_c tensile strain, stress, energy at break fatigue crack growth rate curve and its parameters (r_c, and F) crack precursor size c_0 calculation and sensitivity analysis strain-life, stress-life, and energy-life fatigue curves 			
FPM-IS	Intrinsic Strength Module <ul style="list-style-type: none"> Recommended for cases with fatigue life longer than 10^6 cycles 	\$2,445		
	<p style="text-align: center;">Deliverables</p> <table border="0"> <tr> <td style="vertical-align: top;"> <p style="text-align: center;">Experiments</p> <ul style="list-style-type: none"> cutting force raw data, 3 strain levels </td> <td style="vertical-align: top;"> <p style="text-align: center;">Analysis and Reporting</p> <ul style="list-style-type: none"> cutting vs. tearing curve intrinsic strength T_0 fatigue threshold strain, stress, energy (if ordered with FPM-C) </td> </tr> </table>	<p style="text-align: center;">Experiments</p> <ul style="list-style-type: none"> cutting force raw data, 3 strain levels 	<p style="text-align: center;">Analysis and Reporting</p> <ul style="list-style-type: none"> cutting vs. tearing curve intrinsic strength T_0 fatigue threshold strain, stress, energy (if ordered with FPM-C) 	
<p style="text-align: center;">Experiments</p> <ul style="list-style-type: none"> cutting force raw data, 3 strain levels 	<p style="text-align: center;">Analysis and Reporting</p> <ul style="list-style-type: none"> cutting vs. tearing curve intrinsic strength T_0 fatigue threshold strain, stress, energy (if ordered with FPM-C) 			

Fatigue Behavior (Continued)

FPM-NR	Non-relaxing Fatigue Module <ul style="list-style-type: none"> Recommended for cases where fatigue loading is never fully relieved to zero one temperature between -40°C and 150°C test is run under a range of nonrelaxing ($R > 0$) conditions Note: It is required to run FPM-C in order to run this Module. 	\$3,000
Deliverables		
Experiments		
<ul style="list-style-type: none"> raw data from fatigue crack growth arrest procedure with minimum strain sweep 		
Analysis and Reporting		
<ul style="list-style-type: none"> strain crystallization functions $F(R)$ and $x(R)$ Haigh diagram showing sensitivity to minimum strain of crack nucleation life 		
FPM-RL	Reliability Module <ul style="list-style-type: none"> Recommended when probability of failure needs to be estimated. Testing is run at room temperature: 23°C. If ordered with FPM-C, includes analysis of strain life curve dependence on probability of occurrence. 	\$3,450
Deliverables		
Experiments		
<ul style="list-style-type: none"> 50 simple tension pull to failure experiments Static tearing, 3 replicates 		
Analysis and Reporting		
<ul style="list-style-type: none"> Summary statistics for pull to failure (strain, stress, energy at break) Calculation of crack precursor size distribution c_0 Weibull analysis parameters relating frequency of occurrence to size of crack precursor 		
FPM-TB	Thermal Effects Module - Basic <ul style="list-style-type: none"> Always recommended for cases with self-heating or thermal gradients User gives 2 (additional to FPM-C) temperatures between -40°C & 150°C Note: It is required to run FPM-C in order to run this Module. 	\$4,312
Deliverables		
Experiments		
<ul style="list-style-type: none"> static tearing raw data at 2 temperatures cyclic stress strain raw data at 1 temp., 1 frequency, 5 strain levels 		
Analysis and Reporting		
<ul style="list-style-type: none"> heat generation law parameters describing dependence of hysteresis on strain tear strength vs. temperature 		
FPM-TX	Advanced Effects Add-on to Thermal Module <ul style="list-style-type: none"> For highest accuracy in structural and heat transfer analyses of self-heating and thermal gradient effects. FPM-TB is required as prerequisite. 	\$5,780
Deliverables		
Experiments		
<ul style="list-style-type: none"> static tearing raw data at 2 more temperatures cyclic stress strain raw data at 3 temperatures and 3 frequencies thermal conductivity, specific heat & density measurements thermal expansion measurement 		
Analysis and Reporting		
<ul style="list-style-type: none"> heat generation law parameters describing dependence of hysteresis on strain, rate, and temperature tear strength vs. temperature fatigue crack growth rate law temperature sensitivity coefficient coefficient of thermal expansion 		

Ageing Effects

FPM-AB	Ageing Module - Basic	\$4,975
<ul style="list-style-type: none"> • Recommended for cases with fatigue life longer than 10^6 cycles, and when ageing must be taken into account for a specific aged condition. • Note: It is required to run FPM-IS in order to run this Module. 		
Deliverables		
Experiments		
<ul style="list-style-type: none"> • ageing in oven at 1 client-specified time and temperature • static tearing raw data, unaged vs. aged • cutting force raw data, unaged vs. aged 		
Analysis and Reporting		
<ul style="list-style-type: none"> • cutting vs. tearing curve, unaged vs aged • intrinsic strength T_0, unaged vs aged • tearing energy T_c, unaged vs aged • fatigue threshold strain, stress, energy, unaged vs aged (when ordered with FPM-C) 		
FPM-AM	Ageing Module – 3x3 matrix / Master Curve	\$22,495
<ul style="list-style-type: none"> • Recommended for cases with fatigue life longer than 10^6 cycles, and when ageing must be taken into account. • Note: It is required to run FPM-IS in order to run this Module. 		
Deliverables		
Experiments		
<ul style="list-style-type: none"> • ageing in oven at 3 temperatures for 3 time periods: 3 days, 10 days, 30 days • static tearing raw data, 3 ageing periods x 3 ageing temperatures • cutting force raw data, 3 strain levels x 3 ageing periods x 3 ageing temperatures 		
Analysis and Reporting		
<ul style="list-style-type: none"> • cutting vs. tearing curve at each aged condition • intrinsic strength T_0 vs. ageing master curve • tearing energy T_c vs. ageing master curve • Arrhenius activation energy, E_a • fatigue threshold strain, stress, energy vs. ageing curves (when ordered with FPM-C) • parameters specifying ageing time and temperature dependence of T_0 and T_c • extrapolation of ageing effects to longer timescales for an application-specific temperature 		

Other Effects

FPM-CCG	Elastomer Fatigue Property Map – Creep Crack Growth Module	\$1,615		
<ul style="list-style-type: none"> • Recommended for cases involving long periods under static load • User specifies one temperature between -40°C and 175°C 				
Deliverables				
<table style="width: 100%; border: none;"> <tr> <td style="width: 50%; text-align: center; vertical-align: top;"> <p>Experiments</p> <ul style="list-style-type: none"> • raw data from quasistatic creep crack growth procedure </td> <td style="width: 50%; text-align: center; vertical-align: top;"> <p>Analysis and Reporting</p> <ul style="list-style-type: none"> • Creep crack growth rate curve and its parameters (T_q, r_q, and F_q) </td> </tr> </table>			<p>Experiments</p> <ul style="list-style-type: none"> • raw data from quasistatic creep crack growth procedure 	<p>Analysis and Reporting</p> <ul style="list-style-type: none"> • Creep crack growth rate curve and its parameters (T_q, r_q, and F_q)
<p>Experiments</p> <ul style="list-style-type: none"> • raw data from quasistatic creep crack growth procedure 	<p>Analysis and Reporting</p> <ul style="list-style-type: none"> • Creep crack growth rate curve and its parameters (T_q, r_q, and F_q) 			
FPM-S	Elastomer Fatigue Property Map – Cyclic Softening Module	\$2,845		
<ul style="list-style-type: none"> • Recommended for cases where stiffness degradation limits durability • User specifies one temperature between -40°C and 175°C 				
Deliverables				
<table style="width: 100%; border: none;"> <tr> <td style="width: 50%; text-align: center; vertical-align: top;"> <p>Experiments</p> <ul style="list-style-type: none"> • raw data from cyclic softening procedure on simple tension strips at 5 strain levels </td> <td style="width: 50%; text-align: center; vertical-align: top;"> <p>Analysis and Reporting</p> <ul style="list-style-type: none"> • Family of cyclic softening curves showing stiffness degradation rate as a function of life consumed • Curve fit to cyclic softening model </td> </tr> </table>			<p>Experiments</p> <ul style="list-style-type: none"> • raw data from cyclic softening procedure on simple tension strips at 5 strain levels 	<p>Analysis and Reporting</p> <ul style="list-style-type: none"> • Family of cyclic softening curves showing stiffness degradation rate as a function of life consumed • Curve fit to cyclic softening model
<p>Experiments</p> <ul style="list-style-type: none"> • raw data from cyclic softening procedure on simple tension strips at 5 strain levels 	<p>Analysis and Reporting</p> <ul style="list-style-type: none"> • Family of cyclic softening curves showing stiffness degradation rate as a function of life consumed • Curve fit to cyclic softening model 			

Ordering Instructions:

- 1) Send **Purchase Order** specifying number of materials and tests to be run, and the email address to which results should be delivered, to:

Endurica LLC
jasuter@endurica.com
1219 West Main Cross, Suite 201
Findlay, OH 45840
USA
Phone: +1-419-957-0543

- 2) Test specimens are die-cut from customer-provided sheets of approximate dimensions 150 mm x 150 mm x 1-2 mm. Please see the **Fatigue Property Map Material Shipment Form** on the following page for the number of material slabs to send to Axel Products, Inc.
 - a. Label each slab with the material identifier you want us to use in reporting.
 - b. Complete the **Fatigue Property Map Material Shipment Form** for each material and include it with your material samples.
- 3) Test execution times may vary, depending on lab backlog and Modules requested. Once testing, analysis and reporting are complete, you will receive an email from Endurica containing the analysis and summary report, and all raw data files.

Notes:

All results delivered via email. The raw data is delivered in an ASCII format. The analysis and summary report is delivered in PDF format.

Customer data and materials will be retained for 1 year after initial data delivery.

Purchase Order, VISA, MasterCard, AMEX, and Discover Card are accepted methods of payment.
Terms: NET 30 Days after Delivery of Final Report and Data.

Fatigue Property Map Material Shipment Form

Include one form for each material in your shipment

1) Check the items being requested, and complete the customer specs:

✓	Item	Module	Customer Specifications	Slabs*
	FPM-H	Hyperelastic	Peak strain levels: Temperature:	4
	FPM-HV	Volumetric Compression		1
	FPM-C	Core Fatigue Testing	Test Temp: Test Freq:	5
	FPM-IS	Intrinsic Strength		3
	FPM-NR	Nonrelaxing	Test Temp: Test Freq:	1
	FPM-RL	Reliability		10
	FPM-TB	Thermal – Basic	Test Temps (2):	3
	FPM-TA	Thermal - Advanced	Test Temps (3): Frequencies (3):	3
	FPM-AB	Ageing - Basic	Aged / Unaged	5
	FPM-AM	Ageing – Master Curve	Ageing Oven Temps (3):	30
	FPM-CCG	Creep Crack Growth	Test Temp:	1
	FPM-SFG	Cyclic Softening	Test Temp:	1
			Total Slabs Sent	

Customer Notes:

* Nominal slab dimensions are 150 mm x 150 mm x 2 mm.

2) Attach a business card or write the contact information of the person responsible for specifying this testing.

3) Ship samples to:

Axel Products, Inc.
 2255 S. Industrial Hwy.
 Ann Arbor MI 48104
 USA
 Phone: +1-734-994-8308
 Fax: +1-734-994-8309



Analysis and Summary Report Examples

Fatigue Property Mapping – Hyperelastic Module Example Results (FPM-H)

The Hyperelastic Module produces the basic information about nonlinear stress-strain behavior that is needed to obtain a hyperelastic model for use with FEA, and to represent the cyclic softening (Mullins effect) in the FE model.

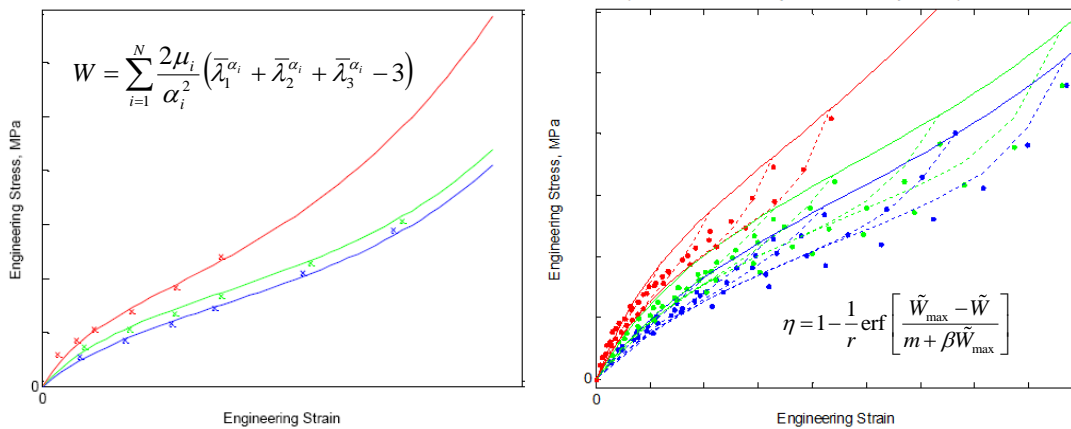


Figure 1. The lefthand plot shows typical hyperelastic law fit to stress-strain curves measured in simple (blue), planar (green) and equibiaxial (red) tension. Observations are shown with symbols, best fit with solid lines. The righthand plot shows typical Mullins law fit to cyclic stabilized stress-strain curves.

Fatigue Property Mapping – Core Module Example Results (FPM-C)

The Core Module gives the basic fatigue crack growth rate curve (Figures 2 and 3), as well as the strain-life curve and crack precursor size (Figure 4). This module is a pre-requisite for any fatigue analysis.

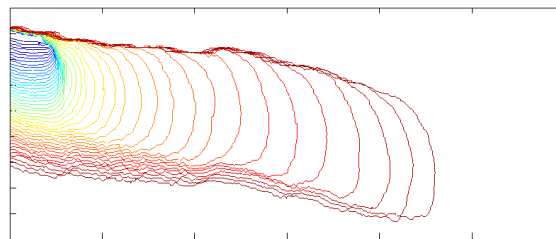


Figure 2. Typical crack tip images collected during fatigue testing. Each contour represents the crack tip shape at a given number of cycles. Colors indicate time, with blue at the beginning of the test, and deep red at the end.

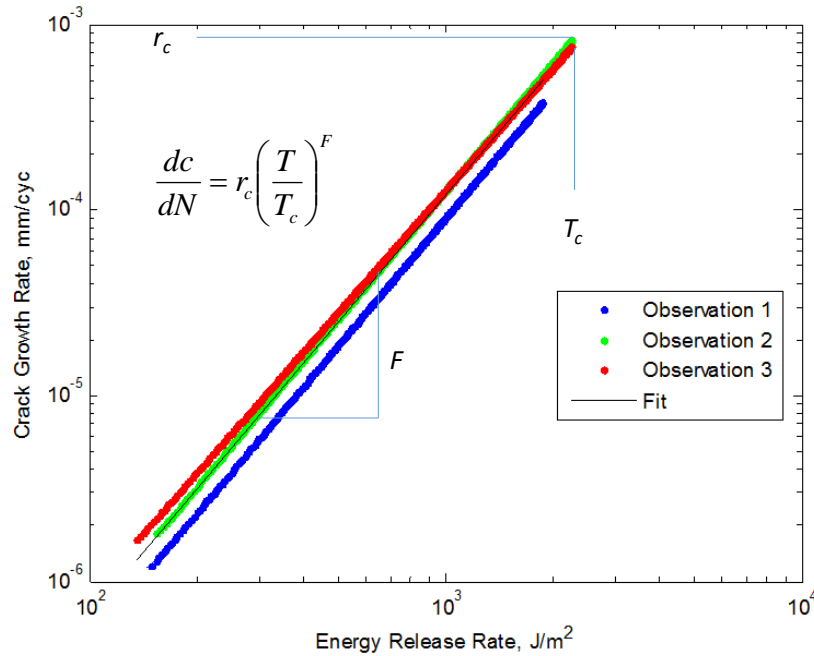


Figure 3. Fatigue crack growth rate observations and model fit parameters.

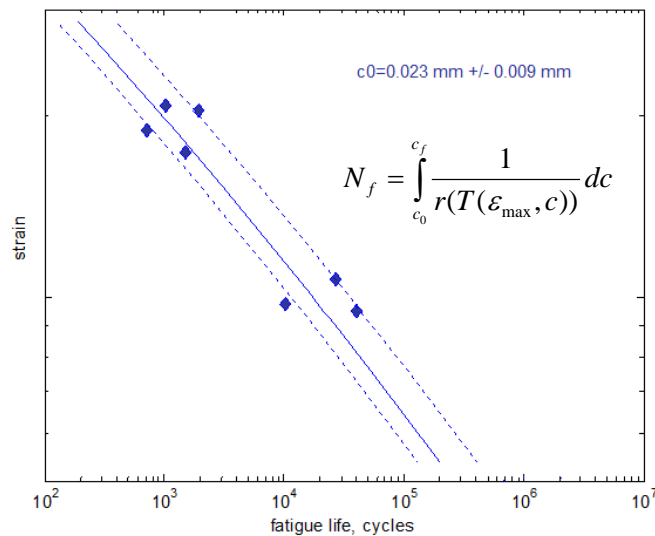


Figure 4. Crack nucleation experiments overlaid with computed strain-life curve corresponding to crack precursor size c_0 . Dotted lines show the effect of crack precursor size variation on the strain-life curve.

Fatigue Property Mapping – Intrinsic Strength Module Example Results (FPM-IS)

This module measures the material's intrinsic strength – the minimum energy release rate required to produce crack growth. Because operation below this limit does not supply sufficient energy to grow a crack, the intrinsic strength is also called the endurance limit. Use this module when the material is expected to serve for a very large number of cycles.

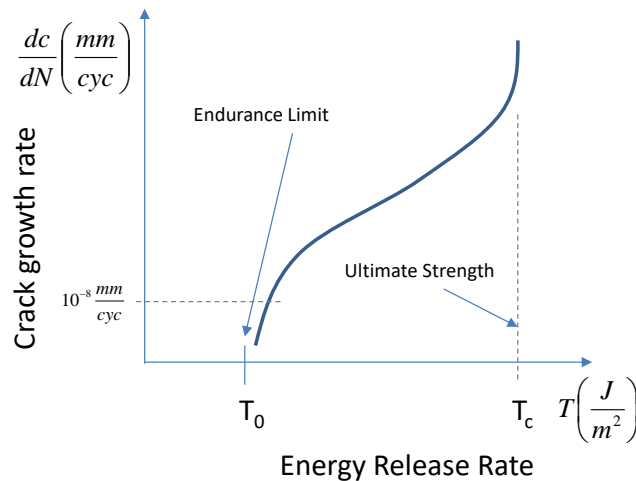


Figure 5. The fatigue endurance limit T_0 is the highest energy release rate that can be carried without incurring fatigue crack growth. Its value reflects the intrinsic strength of the polymer chains that must be broken in order to propagate a crack. It is measured via cutting experiments with a highly sharpened, instrumented microtome blade.

Fatigue Property Mapping – Nonrelaxing Module Example Results (FPM-NR)

Under nonrelaxing loads, some elastomers exhibit enhanced fatigue life / slowed crack growth due to strain crystallization effects. The effect is measured using crack arrest experiments in which a crack growing initially under fully relaxing loads is gradually operated under increasingly nonrelaxing loads. By observing the kinetics of crack arrest, a great deal can be learned about how the effect is impacting fatigue performance. This information is required when constructing rubber’s Haigh diagram for a crystallizing material.

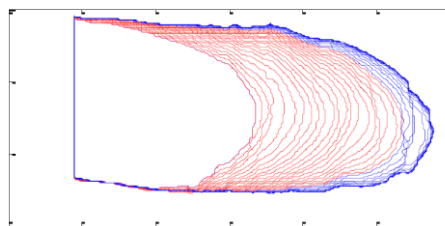


Figure 6. Crack tip images obtained during crack arrest experiments. Red images show the crack tip while growing under fully relaxing conditions. Blue images show the crack tip while growing under nonrelaxing conditions.

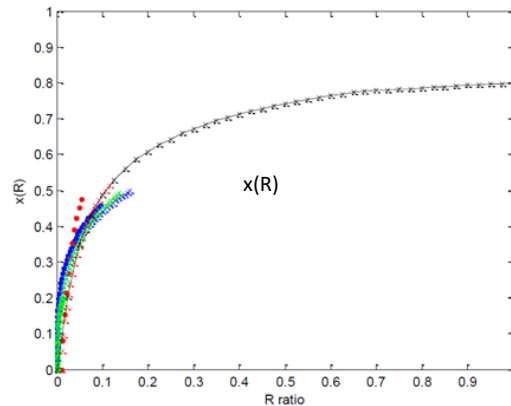


Figure 7. Typical strain-crystallization function $x(R)$, showing dependence on the degree of nonrelaxation ratio $R = T_{min} / T_{max}$ (where T_{min} and T_{max} are the energy release rate cycle extremes).

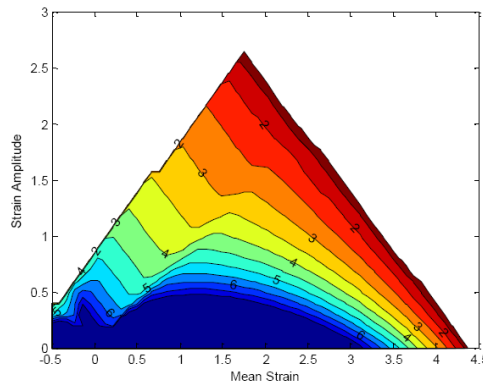


Figure 8. Typical Haigh diagram for simple tension/compression loading, computed based on crack growth measurements and crack precursor size inferred from nucleation experiments. Contours are colored and labeled according to the base 10 logarithm of the fatigue crack nucleation life.

Fatigue Property Mapping – Reliability Example Results (FPM-RL)

The Reliability Module characterizes the rate of occurrence of crack precursors of a given size. This information is useful for estimating likely strength or fatigue failure rates for quality / warranty applications.

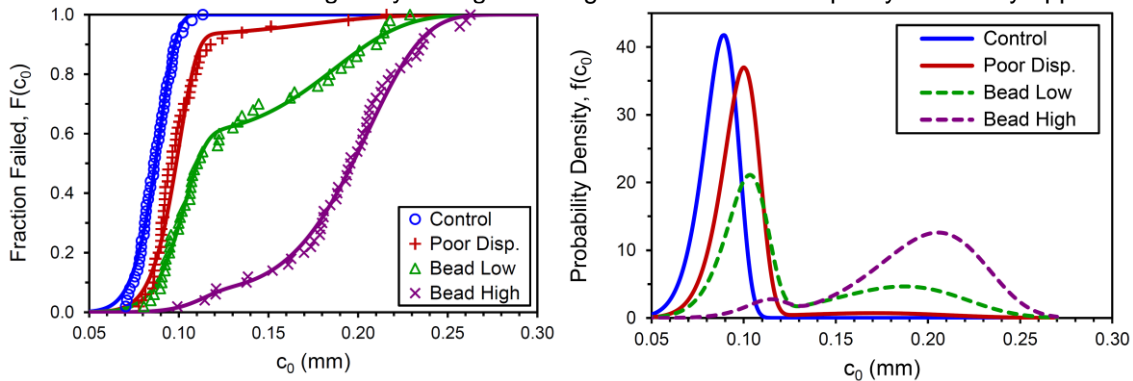


Figure 9. Typical Weibull analysis results showing cumulative and probability density distributions for crack precursor size.

Fatigue Property Mapping – Thermal Module Example Results (FPM-TH)

The thermal modules produce information useful for cases involving significant self-heating and/or thermal gradients.

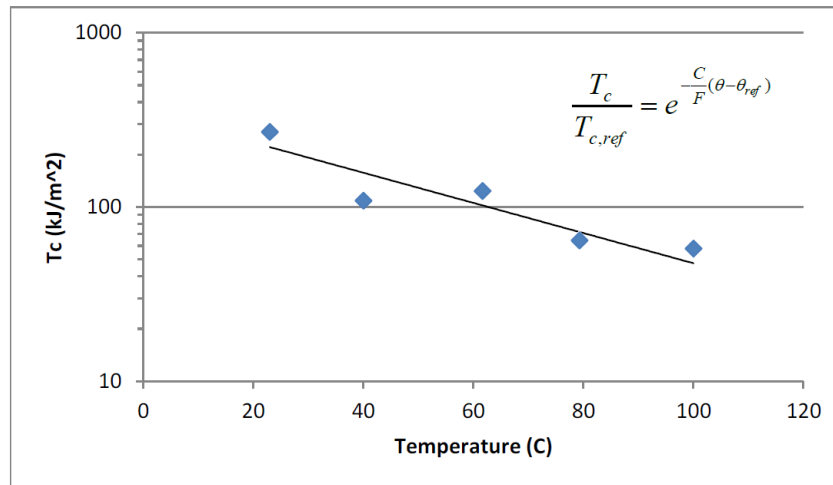


Figure 10. Dependence of tearing energy T_c on specimen temperature.

Fatigue Property Mapping – Extended Life Module Example Results (FPM-EL)

The extended life module is recommended when the material operates below the endurance limit. Although cracks may not grow due to mechanical fatigue, the material properties may still evolve with exposure to heat history. A series of oven ageing experiments is used to develop master curves showing the evolution of stiffness, intrinsic strength, and fracture strength with time. The protocol also produces an estimate of the activation energy of the Arrhenius rate law describing the time-temperature dependence of ageing in the material.

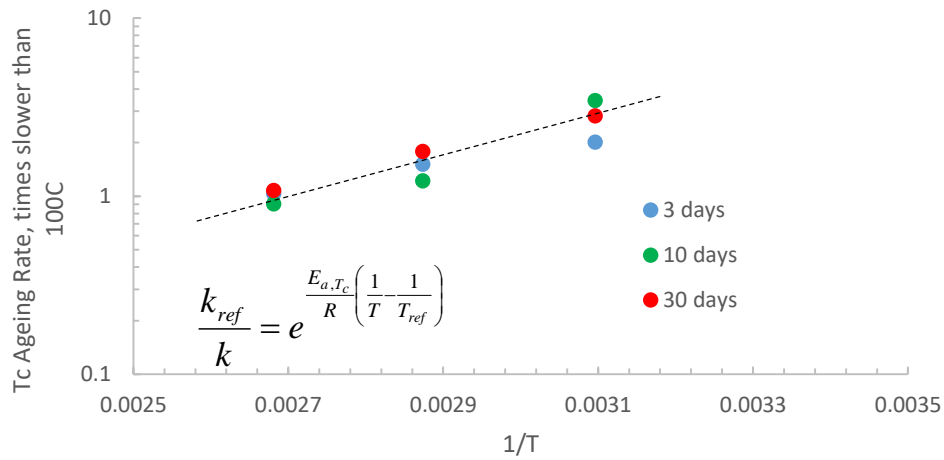


Figure 11. Determination of ageing rate dependence on time and temperature.

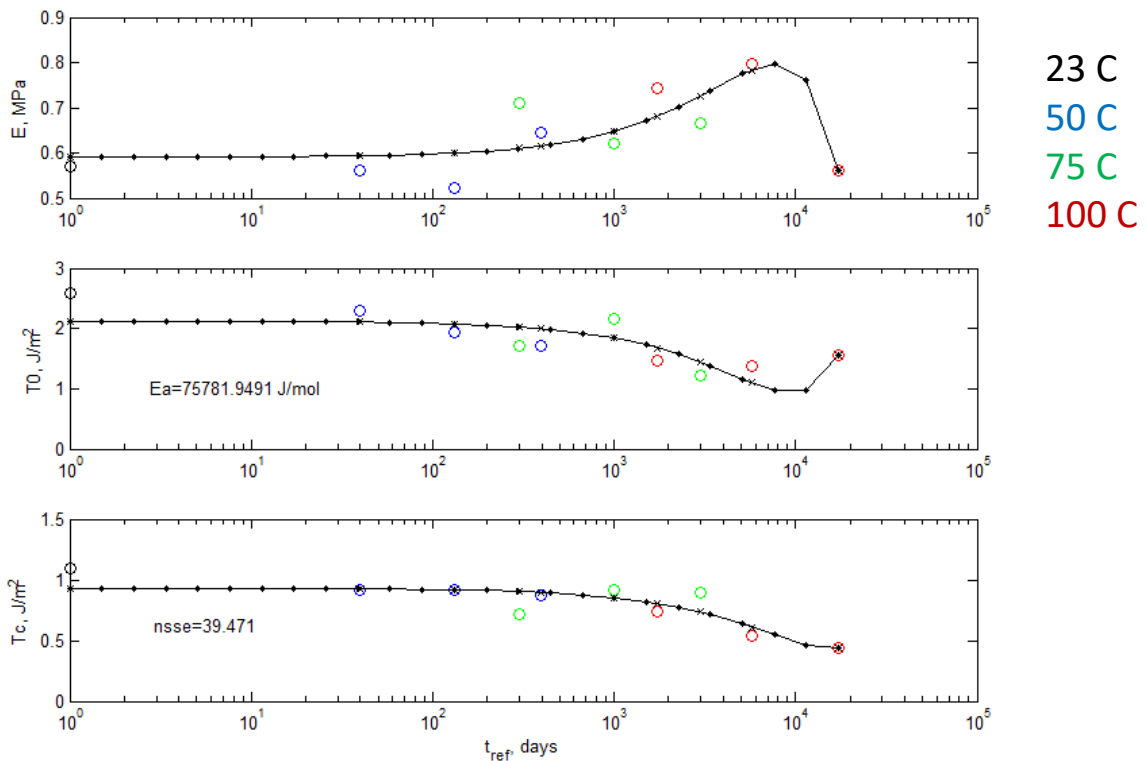


Figure 12. Ageing experiments over a 3x3 matrix of oven temperature and time settings are used to develop accelerated degradation curves. Based on the Arrhenius rate law, the accelerated degradation curves are compiled into a master curve for a specific reference temperature (here, the reference temperature is 23 degC).

Fatigue Property Mapping – Creep Crack Growth Example Results (FPM-CCG)

The creep crack growth rate module produces information useful for cases involving long-term static loads under which time-dependent crack growth (rather than cycle-dependent crack growth) may occur.

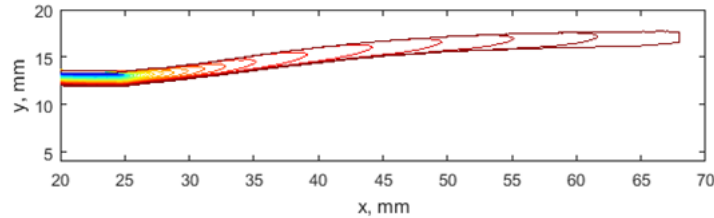


Figure 13. Typical crack tip images collected during fatigue testing. Each contour represents the crack tip shape at a given number of cycles. Colors indicate time, with blue at the beginning of the test, and deep red at the end.

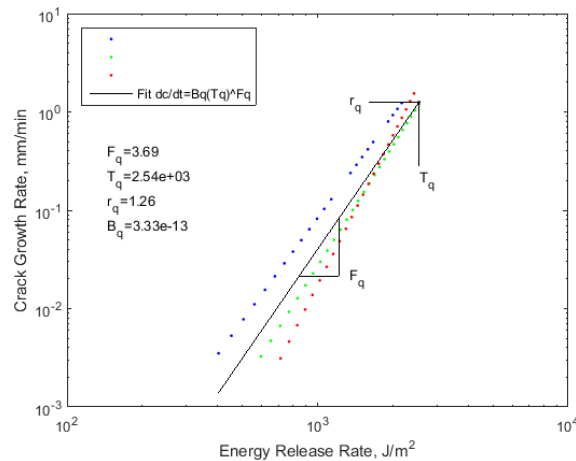


Figure 14. Fatigue crack growth rate observations and model fit parameters.

Fatigue Property Mapping – Cyclic Softening (FPM-CCG)

The cyclic softening module produces information about the rate at which stiffness evolves under cyclic solicitations. This information is useful for modeling stiffness evolution under fatigue cycles using Endurica DT's stiffness loss cosimulation feature. The experiment is run in displacement control, and it records the evolution of the peak stress with cycles.

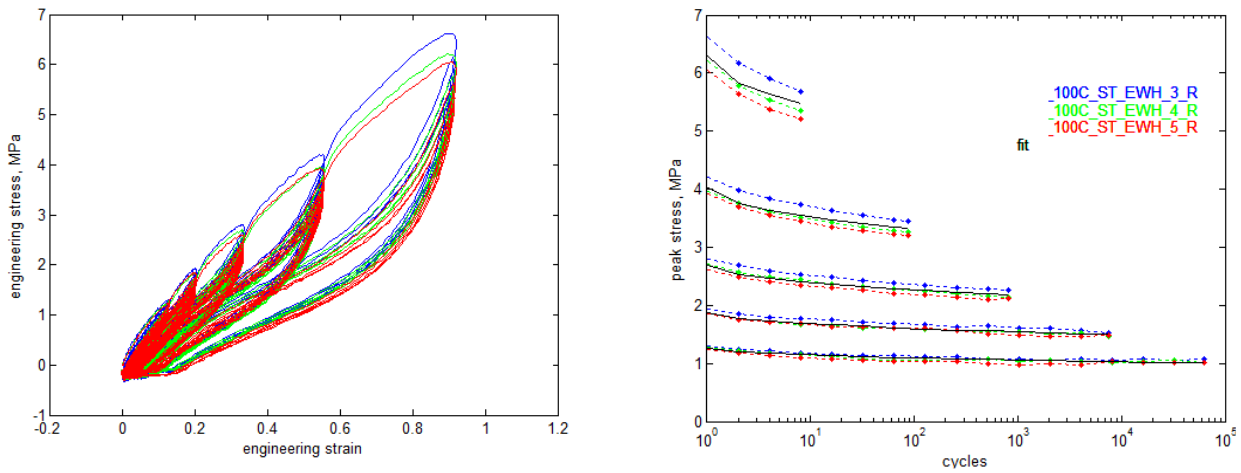


Figure 15. Cyclic softening stress-strain response (left), and evolution of peak stress at 5 different strain levels.



About This Service

The service enables engineers to obtain, from a commercial source, highly reliable, affordable measurements suitable for use in fatigue analysis.

Training on the experimental procedures and analysis for fatigue life prediction is available, see the website below for more information and schedule.

About Endurica LLC

Endurica LLC develops the world's most versatile and best-validated fatigue life simulation system for elastomers. Through its technology and services, Endurica empowers its customers to analyze real-world fatigue performance of elastomers at the design stage, when the greatest opportunity exists to influence performance, and before investment in costly fatigue testing of prototypes. The company was founded in 2008.



www.endurica.com

About Axel Products

Axel Products provides testing services for engineers and analysts. The focus is on the characterization of nonlinear materials such as elastomers and plastics. Data from the Axel laboratory is often used to develop material models in finite element analysis codes such as ABAQUS, fe-safe/Rubber, MSC.Marc, ANSYS and LS-Dyna. Testing services are also provided to examine sealing and fatigue problems, long term thermal mechanical testing and high strain rate testing. The company was founded in 1994.



www.axelproducts.com